



Engine	Cummins QSB7
Rated Power	124 kW(166 hp / 169 ps) @ 2,050 rpm
Net Power	117 kW(157 hp / 159 ps) @ 2,050 rpm
Maximum Dig Depth	6,562 mm
Standard Bucket Capacity	1.0 m ³
Operating Weight	22,000 kg

922E EXCAVATOR

PERFORMANCE PARAMETERS

Operating Weight	22,000 kg
Std. Bucket Heaped Capacity (Referenced)	1.0 m ³
Maximum Travel Speed	5.3 km/h
Swing Speed	10.5 rpm
Drawbar Pull	220 kN
Bucket Digging Force (ISO)	152.5 kN
Arm Digging Force (ISO)	105 kN

ENGINE

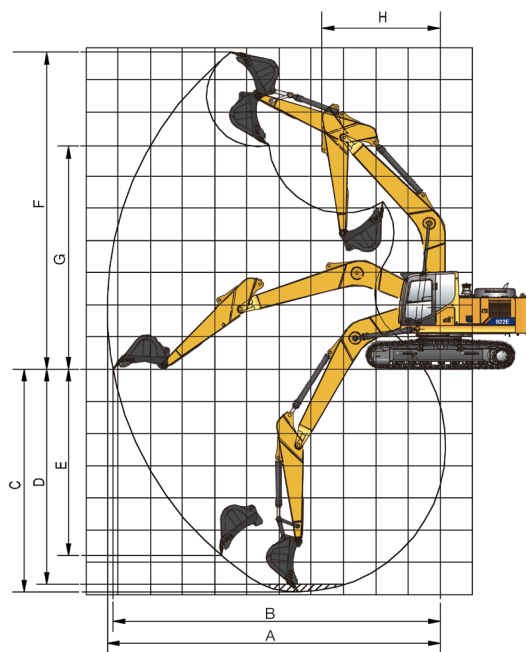
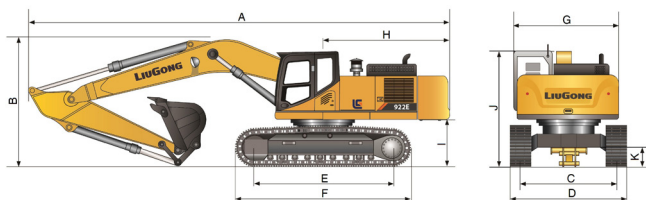
Emission Regulation	Tier 3 / Stage IIIA
Manufacturer	Cummins
Model	QSB7
Rated Power	124 kW(166 hp / 169 ps) @ 2,050 rpm
Net Power	117 kW(157 hp / 159 ps) @ 2,050 rpm
Peak Torque	658 N·m @ 1,400 rpm
Number of Cylinders	6
Displacement	6.7 L

UNDERCARRIAGE

Number of Shoes per Side	49
Number of Upper Rollers per Side	2
Number of Bottom Rollers per Side	8

DIMENSIONS

A Shipping Length	9,570 mm
B Shipping Height	3,140 mm
C Track Gauge	2,390 mm
D Undercarriage Width	2,990 mm
E Length to Center of Rollers	3,650 mm
F Track Length	4,440 mm
G Overall Width of Upper Structure	2,760 mm
H Tail Swing Radius	2,780 mm
I Counterweight Ground Clearance	1,070 mm
J Overall Height of Cab	3,040 mm
K Min. Ground Clearance	440 mm



WORKING RANGE

Boom Length	5,710 mm
Arm Length	2,915 mm
A Max. Digging Reach	9,870 mm
B Max. Digging Reach on Ground	9,685 mm
C Max. Digging Depth	6,562 mm
D Max. Digging Depth, 2.5 m (8') level	6,390 mm
E Max. Vertical Wall Digging Depth	5,080 mm
F Max. Cutting Height	9,945 mm
G Max. Dumping Height	7,170 mm
H Min. Front Swing Radius	3,090 mm

HYDRAULIC SYSTEM

Main Pumps Total Flow	2 x 224 L/min
Relief Pressure, main	34.3 MPa

SERVICE CAPACITIES

Fuel Tank	420 L
Engine Oil	25 L
Cooling System	25 L
Hydraulic Reservoir	210 L
Hydraulic System Total	330 L